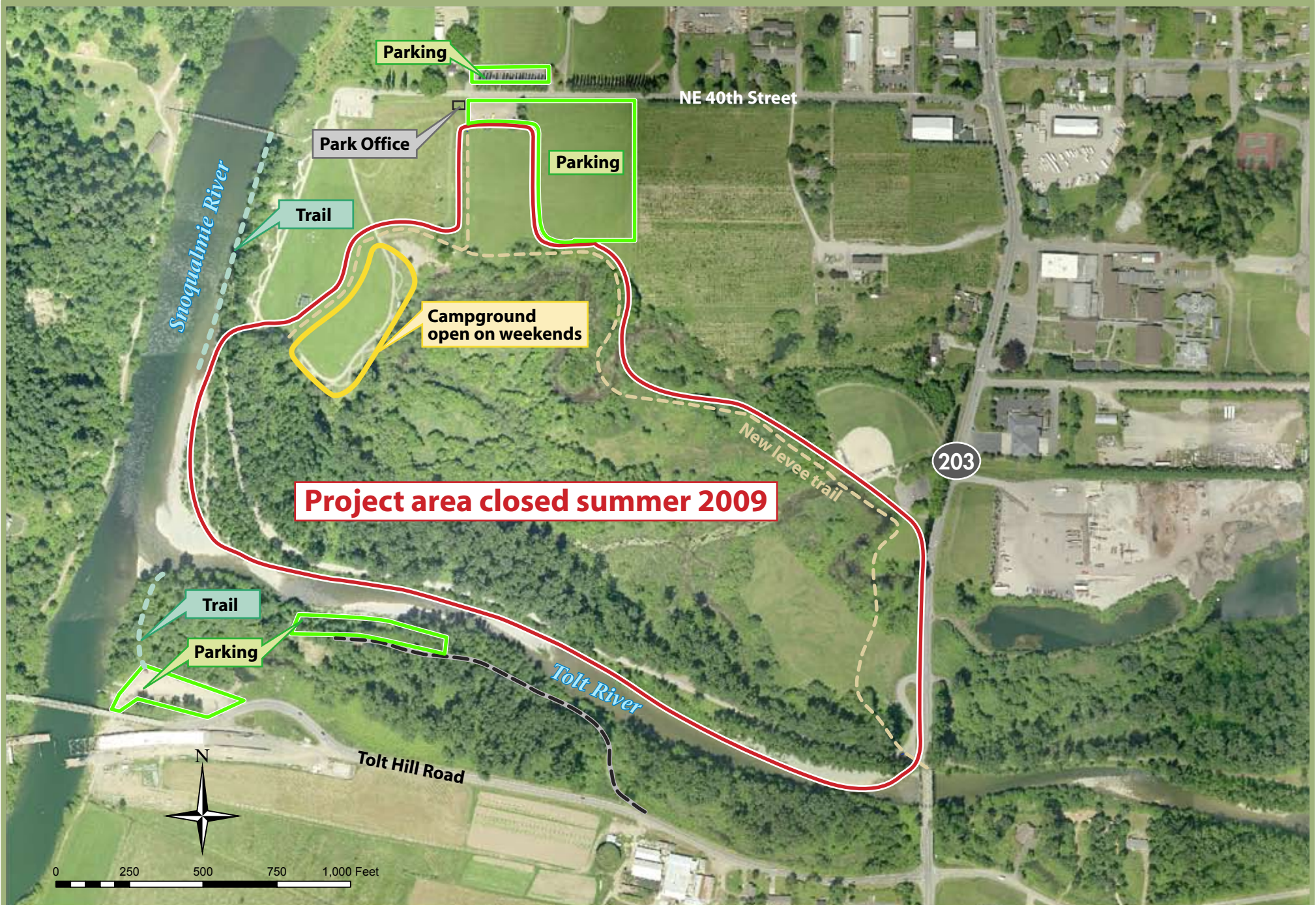


Tolt River Restoration Project Update

Summer 2009



WHAT'S HAPPENING?

This summer King County and the City of Seattle are building a project to restore salmon habitat near the confluence of the Tolt and Snoqualmie rivers. Flood protection from the Tolt River will be maintained and numerous enhancements to the park will also be created.

Work includes removing the old, degraded north Tolt levee, and rebuilding it to protect the park from river erosion, and building new trails for public access throughout the park.

Some areas in Tolt-MacDonald Park will be closed to public access while the project is under way. However, most of the park will remain open and available for public use throughout the Construction.

RIVER ACCESS and PARKING

The road that ran atop the old Tolt River north levee is closed and will no longer provide access or parking. There is parking and river access along Tolt Hill Road. The boat launch parking area next to the Snoqualmie River bridge is open to the general public. Additional parking is available in the park field on the south side of the main park entry road which is accessible from NE 40th street.

AREAS REMAINING OPEN

- Access to the Boy Scout Bridge and all portions of the park on the western shore of the Snoqualmie River, including six yurts.
- All ball fields and picnic shelters will remain open for the duration of the construction project.
- Nineteen tent campsites and group campsites for 40 and 60 people will be available every day throughout the summer.
- Sixteen RV campsites will be available every weekend all summer and during the week until mid-August.

FOR MORE INFORMATION:

- Park information is available by calling 206-205-5434 or by visiting <http://www.kingcounty.gov/parks>
- Information on the restoration effort is available at <http://www.kingcounty.gov> and searching "Tolt Restoration", or by contacting Clint Loper of the King County Water and Land Resources Division at 206-296-8378, or Brent Lackey of Seattle Public Utilities at 206-684-7890.